



Durham
University

Inspiring the extraordinary



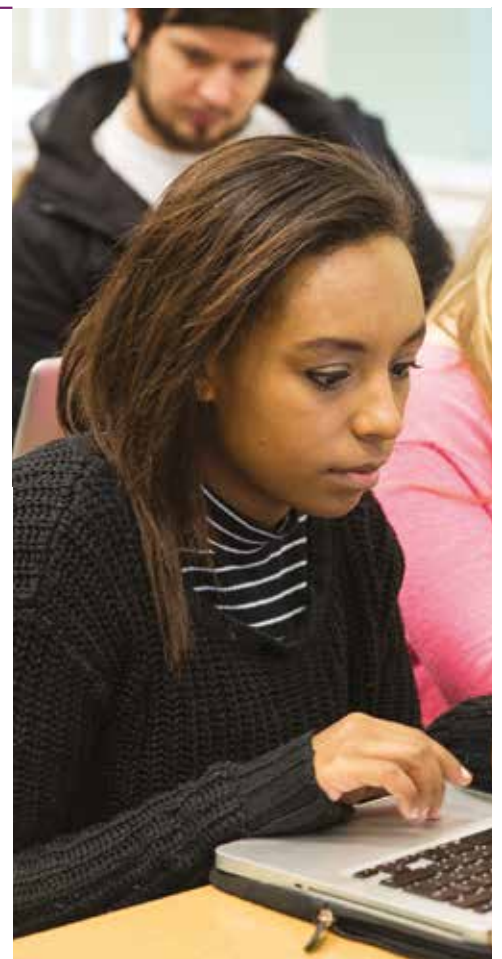
Geography
at Durham University

Contents



All information correct at time of publication

Welcome to Durham Geography	2
BA Programme Structure	4
BSc Programme Structure	6
How do the BA and BSc Programmes Differ?	8
Learning and Teaching Methods	10
Fieldwork	12
Year Abroad and Placement Opportunities	14
Departmental Support	15
Frequently Asked Questions	16
Key Personnel	19
Navigating Durham	20



Welcome to Durham Geography



Founded in 1928, the Department of Geography at Durham is one of the leading centres of geography in the world. It is filled with people like you—the students and staff who create and sustain a vibrant community.

Durham Geography is an outstanding place to prepare for careers that tackle big challenges: from climate change to citizenship and from Antarctic ice-sheets to the algorithms reshaping society. We are ranked 1st in the Times / Sunday Times Good University Guide 2025 and, 4th in the Complete University Guide 2025.

Our ambition is to provide an outstanding education experience for each and every one of our students. As part of our community you will join 66 academics, 40 researchers, 39 professional support, administrative and technical staff, and 750 undergraduates and 100 postgraduates. We also enjoy superb research and teaching environments in a wonderful city, with top class laboratory and IT facilities in a collegial atmosphere.

What makes us stand out? Durham Geography ranks joint-first for research power in the UK's Research Excellence Framework 2021, and our students learn from staff who produce the most world leading research publications in the country. We are currently ranked 16th by the QS World University Rankings by Subject (2025).

Our research across the globe doesn't come at the expense of concerns closer to home here in the North East region of the UK. Durham geographers are always finding new ways to connect the local to the global and to supporting the success of our students.

We look forward to you visiting the department, whether in person, via our website or both, and answering any questions you might have on studying here in Durham Geography.

Best wishes,

Professor Colm O'Cofaigh
Head of Department



A Special Welcome from the Durham University Geographical Society



The Durham University Geography Society is one of the University's oldest and largest societies, and we aim to provide a great range of events: we start off just after fresher's week to really enhance your time at Durham and help you to integrate with everyone.

These events range from academic talks by leading researchers to evening socials to day trips (such as hiking and to York Christmas markets). Each year we also hold the Geography Ball, which is one of the best nights of the year and keeps getting larger! We are very fortunate to have such an amazing department at Durham and we do all we can to amplify the University experience you would have here!

Daisy Stevens and Francesca Hyland,
Presidents of DUGS, 2020-2021

Zoe Upcraft

Image taken in Cappadocia, Turkey
Winner in 2024 of the Annual Undergraduate Photographic Competition



Programme Structure – BA

BA Geography (3 year) UCAS Code L702



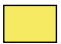
Level 1 introduces students to the breadth of Geography and provides a foundation for understanding a range of social, political and environmental issues. BA and BSc students take the same three compulsory modules: Physical Geography and Human Geography introduce key concepts and research themes from across the discipline while Introduction to Geographical Research develops core skills in geographical research and investigation, computing, information retrieval and data interpretation. In Term 2 students gain hands-on research skills while performing fieldwork in the local region. Students choose a further two optional modules from Geography or another department.

Level 2 consolidates and extends student knowledge through more specialised study according to interests and career aspirations. BA students take the compulsory module Theory and Concepts in Contemporary Human Geography, which covers principal theoretical approaches and debates. Research methods and skills are further enhanced in the compulsory Social Research in Geography, which includes group research projects on a residential fieldwork in Bristol, Glasgow, Manchester or Liverpool. Each student also takes three optional modules. These may all be human geography options, or they may include modules that integrate human and physical geography, or modules from the BSc list, or modules offered by another department (subject to timetable compatibility).

Level 3 provides specialised and cutting edge research-led teaching. All students prepare a Dissertation, an independent research project on a topic of the student's choosing. Each student also takes a further 80 credits (four to six modules) chosen from human geography and integrated modules, with the option of taking up to 20 credits from the BSc list (subject to timetable compatibility). The wide selection of modules enables students to acquire and demonstrate knowledge of specialised areas, in addition to international fieldwork modules in Norway, Berlin, Rotterdam, Jerusalem and Chicago.



LEVEL 1 (choose 2 optional modules)	LEVEL 2 (choose 3 optional modules)	LEVEL 3 (choose a total of 80 credits, but only 1 field trip module)	
		20 credit modules	10 credit modules
Human Geography	Social Research in Geography (double)	Dissertation (double)	Understanding Land Conflicts
			Global Urbanism
Introduction to Geographical Research (double)	Theory and Concepts in Contemporary Human Geography	Berlin: Culture, Politics and Contestation	Geographies of Humanitarianism and the Human
			East Asian Political Geographies
	Economic Geography		Race and Racism in the Planetary Crisis
Physical Geography			Geographies of Money and Finance
	Geographies of Development		Feminist Geographies
			Living Landscapes: Stability and Change in the Anthropocene
Geographies of Crisis	Political Geography	Chicago: Sites of Global Change	Food Geographies
			Postcolonialism, Decoloniality and Development
Introduction to Climate Change	Social and Cultural Geography	Jerusalem: Political Geographies of Settler Colonialism	Rethinking Urban Natures in the Anthropocene
			Geographies for the End of the World
	Urban Geography		Critical Geopolitics: Difference, Affect and Power
Planet Under Pressure		The Arctic: Norway field trip	The City of the Middle East
	Climate Change: Geographical Perspectives		Platform Geographies
			Antarctic Environments
Module(s) from other departments	One BSc Level 2 Module or module from other Department	Up to 20 credits from the Level 3 BSc list (10 credit modules also available)	Critical Resource Geographies

	Compulsory modules		Global challenges (human/physical)		Optional field trip Modules
---	--------------------	---	------------------------------------	---	-----------------------------

Definitive module availability is advertised via the University Faculty Handbook (www.dur.ac.uk/faculty.handbook).

Programme Structure – BSc

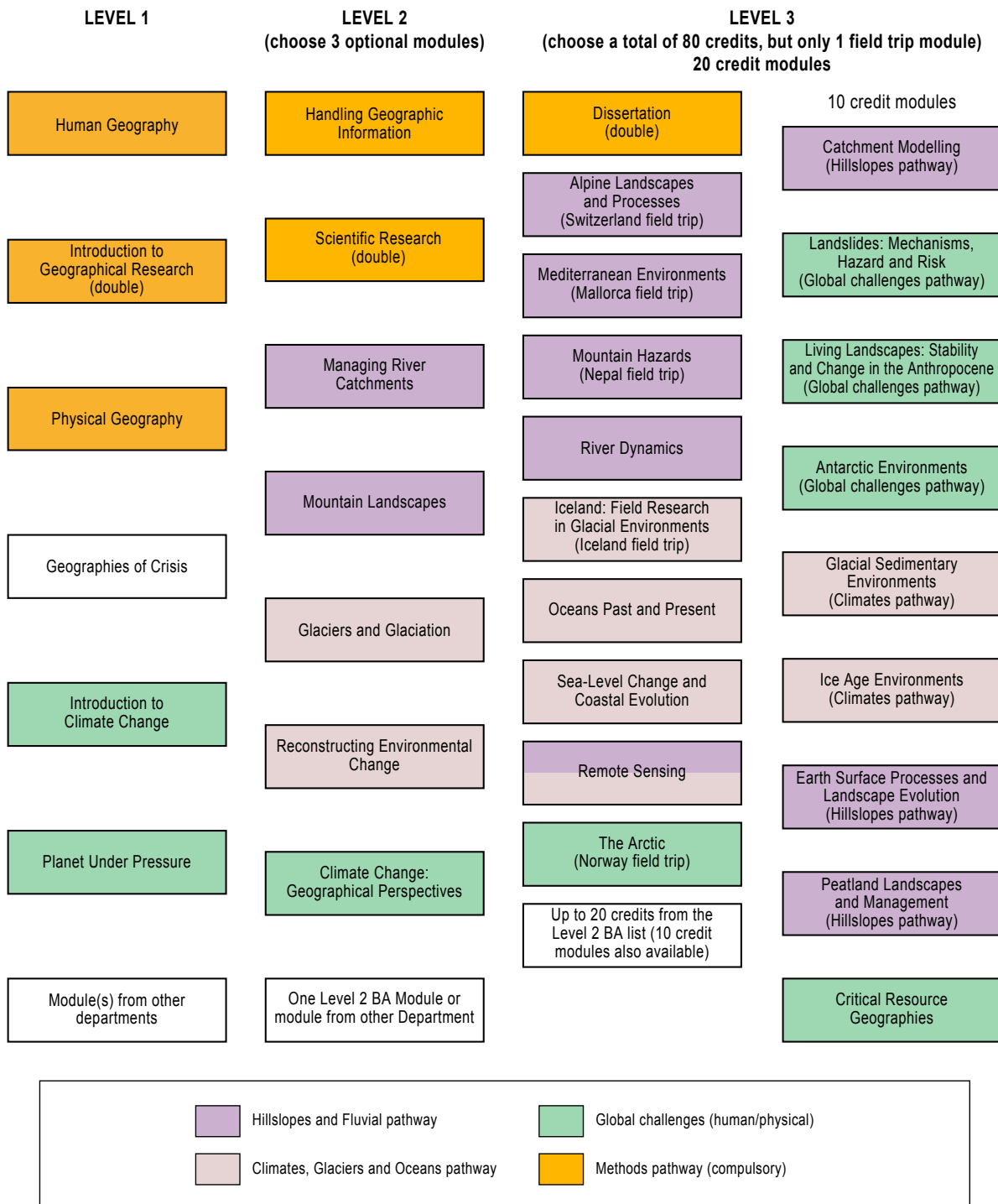
BSc Geography (3 year) UCAS Code F800

Level 1 introduces students to the breadth of Geography and provides a foundation from which to understand and approach a range of environmental and scientific issues. BSc and BA students take the same three compulsory modules: Physical Geography and Human Geography introduce key concepts and research themes from across the discipline while Introduction to Geographical Research students develop basic skills in geographical research and investigation, computing, information retrieval and data interpretation. In Term 2 students attend a residential field week in Teesdale (North Pennines) and extend their knowledge of physical geography methods. In the first term all BSc students undertake a three day residential field course in Upper Teesdale to extend their knowledge of physical geography methods and better understand the local environment. Students choose a further two optional modules from Geography or another department.

Level 2 consolidates and extends student knowledge through more specialised study according to interests and career aspirations. BSc students take the compulsory module Scientific Research in Geography which includes a week of residential fieldwork in the Lake District or Skye. They also take Handling Geographic Information, which develops spatial analysis, GIS, mapping and statistical skills. Each student also takes three optional modules; these may all be physical geography options, or they may include modules that integrate human and physical geography, or modules from the BA list, or modules offered by another department (subject to timetable compatibility).

Level 3 provides specialised and cutting edge research-led teaching. All students prepare a Dissertation, an independent research project on a topic of the student's choosing. Each student also takes a further 80 credits (four to six modules) chosen from human geography and integrated modules, with the option of taking up to 20 credits from the BA list (subject to timetable compatibility). The wide selection of modules enables students to acquire and demonstrate knowledge of specialised areas of the subject and are closely related to research undertaken in the Department. There is also the choice of international fieldwork modules in Arctic Norway, Iceland, Nepal, Mediterranean and Switzerland.





Definitive module availability is advertised via the University Faculty Handbook (www.dur.ac.uk/faculty.handbook).

Not all modules will run each academic year.

How do the BA and BSc Programmes Differ?

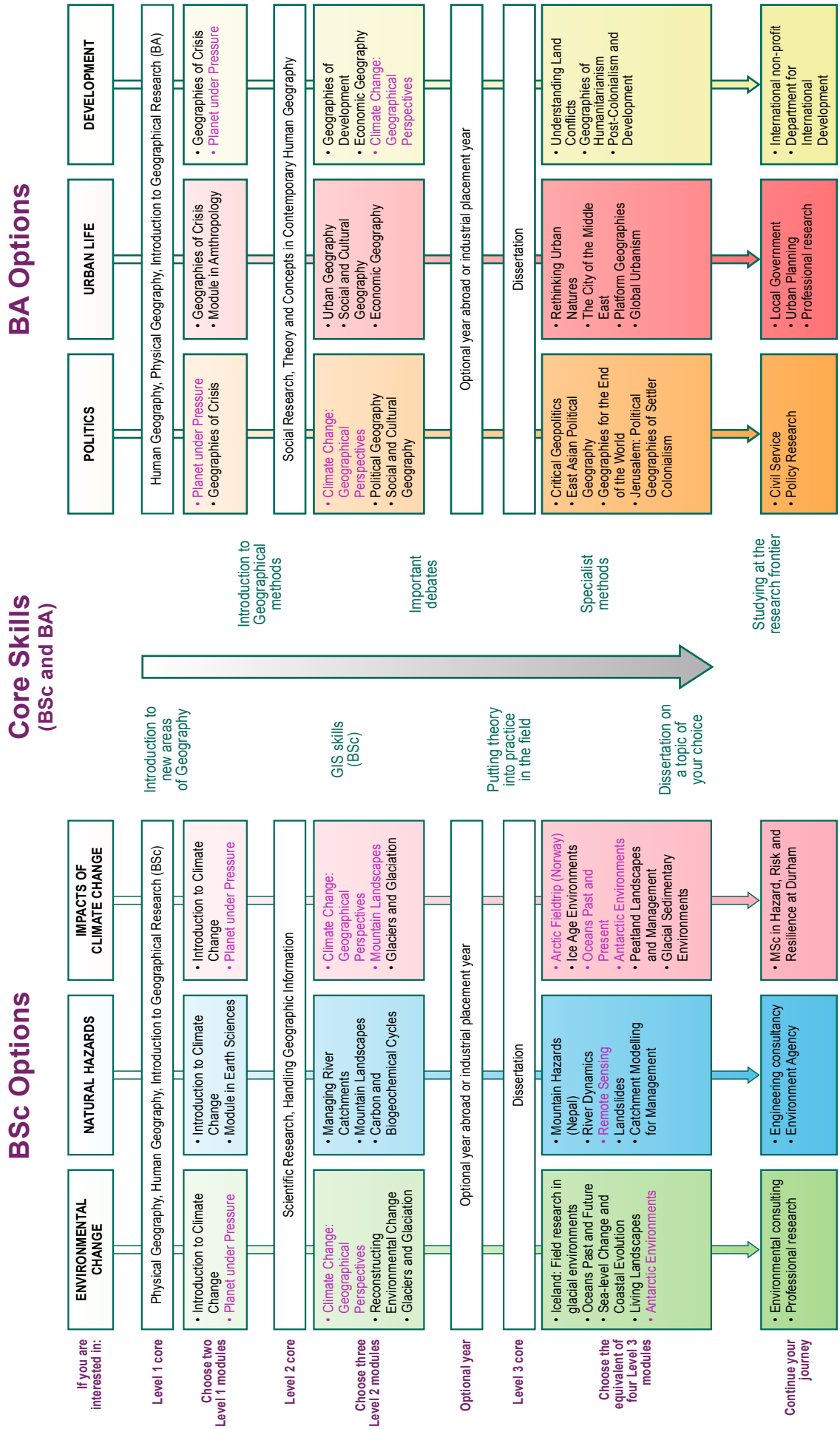
When applying to Durham, you need to decide whether to apply for BA or BSc Geography. The following table sets out some of the similarities and differences between the two courses, so that you can decide which one is right for you.

The following page shows how you can tailor our programmes according to your interests and career aspirations.

	BA	BSc
Standard Offer	A*AA or 38(666)	AAA or A*AB, or 37(666)
A Levels or equivalent	We are looking for interest and enthusiasm in the subject rather than specific combinations of A level subjects. Teaching in the first year is designed to bring everyone up to the same level regardless of background.	
	No specific requirements.	For the BSc we require A level Geography. If you haven't studied Geography, then we require a science subject instead.
Focus	The BA focusses on Human Geography, and the BSc has more of a focus on Physical Geography. However, if you want to continue to study both aspects of Geography, then both programmes include integrated modules that combine Human and Physical Geography. Integrated modules address contemporary issues such as climate change, natural hazards, and environmental governance. At Levels 2 and 3 you can also take one module from the other programme.	
Skills	Both programmes will develop your skills in critical analysis, independent research, writing for a range of audiences, presentations and group work.	
	On the BA, core modules will develop your skills in social science qualitative and quantitative methods, such as surveys, interviews, ethnography, and visual methods.	On the BSc you can choose between introductions to different research methods and skills in Earth and environmental sciences, including GIS and remote sensing, how to analyse and present quantitative data, field and laboratory methods, and numerical modelling. These skills can be further developed in optional modules.
Fieldwork	Fieldtrips are based in urban locations: Newcastle in Level 1, Glasgow, Liverpool and Bristol in Level 2; (optional) Rotterdam, Berlin, Jerusalem and Chicago in Level 3.	Fieldtrips are mainly based in the natural environment, starting in Teesdale in Level 1. Level 2 contains Skye or the Lake District, and Level 3 options are Nepal, Iceland and Switzerland.
	The Level 3 Arctic fieldtrip to northern Norway combines both Human and Physical Geography.	
Teaching styles	Lectures and/or seminars form the basis of most modules. Depending on the module, these are supported by a combination of small group tutorials, practical sessions, laboratory sessions and fieldwork.	
	On the BA, seminars support in-depth reading, essay development, and fieldwork planning.	On the BSc you have the option of practical sessions to learn computer-, lab- or field-based skills.
Assessment	We assess student learning using a multiple different methods (including exams, essays, field and lab reports, project proposals, presentations, posters, policy memos), and so you will develop skills in a wide range of areas. Assessment type differs between modules, and so through your module choice you can tailor how you will be assessed.	
	On the BA, assessment can also include literature reviews, policy reports, photo essays, and reflective diaries.	On the BSc, assessment can also include scientific presentation skills, including reports and posters.
Employability	We have excellent employability across both programmes, with students from both programmes working for a wide range of graduate employers.	
	Example areas that BA graduates work for include public health, environmental, planning and engineering consultancy, and international development.	Example employers that BSc students work for include environmental, energy, water and sustainability consultancy, river restoration, planning and land surveying.

Find your own path through BSc and BA Geography

Through your module choices, you will tailor our degree programmes so that they meet your interests and career aspirations. These examples are a small selection of the many possible routes.



Learning and Teaching Methods

The BA and BSc Geography programmes use the following learning and teaching methods:

Each module contains a core programme of **lectures**. These provide an overview of particular topics. Our leading researchers deliver lectures on cutting edge research in their field, which keeps our teaching focused on key contemporary issues and debates. Lectures offer breadth of coverage, key examples, and help you to develop critical perspectives. You are guided in developing your learning outside the lecture, through emphasis on key themes, reading lists curated by world-leading scholars, and other supporting resources. Lectures include questions and activities to engage students and class sizes become smaller and lectures more interactive as you progress from Level 1 to Level 3.

Tutorials allow in-depth discussion of particular issues in small groups, providing you with the opportunity to question and clarify lecture material. Tutorials are informal and supportive, recognising the different abilities and experiences of each student. Tutorials are also used to develop key skills and to provide individual feedback on your assessed work. As you progress in your degree, you will develop confidence in these small group settings.

Seminars and Workshops allow you to deepen your knowledge of different aspects of Geography. They are usually organised around a particular topic for which students may be asked to undertake some reading or research, or prepare a short presentation, either individually or in groups. Through this format, you gain experience in teamwork and communication skills. Seminars also provide further opportunities to discuss module material, to test ideas and to get feedback from staff.

Practicals enable you to gain hands-on experience of research methods taught on core and optional modules, to develop competence in subject-specific and key skills under the guidance of staff and to experience group work. You also learn the essentials of safe and ethical working procedures. In physical geography, practicals make full use of our world-leading laboratory facilities.



Helpdesks and Surgeries may be arranged at key points to provide advice and feedback before and after the submission of assessed work. Recognising the different skills and levels of experience of each student, they provide the opportunity to ask for advice, check plans and clarify any areas of uncertainty.

Fieldwork is a vital part of our Geography degrees that enables you to apply and develop theoretical knowledge and practical skills in real life contexts. Our fieldtrips are organised in parts of the world in which staff have direct research experience, and bring to life the issues being studied to enrich your learning experience. Fieldwork also permits you to acquire a wide range of skills associated with primary research, enabling you to experience at first hand some of the joys and challenges of working under field conditions.

Guided Independent Study enables you to deepen your knowledge of Geography in a particular area, following up your individual interests as these develop through your degree, and to develop and practice key skills involved in the planning, designing and execution of a piece of rigorous research. All modules expect you to spend a portion of your time working independently, supported with guidance from module convenors, tutors, academic advisors and, from Level 2, the dissertation supervisor who is allocated to each student.



Fieldwork

Fieldwork is fundamental to Geography degree programmes at Durham. It ensures the delivery of a substantial proportion of our subject-specific knowledge and subject-specific skills as well as key skills. Across all years of study, fieldwork enables our students to apply and develop practical skills and to embed knowledge acquired in lectures and reading in real world contexts. Fieldwork also develops skills for problem-based learning, where methods of conducting primary research are applied to challenges of human and physical geography.

BA and BSc Programme Residential Fieldtrip Opportunities

Compulsory trips are provided at no extra cost. For non-compulsory fieldtrips you will be asked to make a contribution to the cost.

Level 1

- Teesdale: Introduction to Geographical Research (BSc only) *
- Newcastle: Introduction to Geographical Research (BA only, non-residential) *

Level 2

- Skye or Lake District: Scientific Research (BSc) *
- Bristol, Glasgow, Manchester or Liverpool: Social Research (BA) *
- Lake District: Glaciers and Glaciation (BSc)
- Whitby: Reconstructing Environmental Change (BSc)

Level 3

- Rotterdam: Geographies of Energy Transition (BA)
- Jerusalem: Territory and Geopolitics (BA)
- Berlin: Culture, Politics and Contestation (BA)
- Chicago: Sites of Global Change (BA)
- Switzerland: Alpine Landscapes and Processes (BSc)
- Iceland: Field Research in Glacial Environments (BSc)
- Norfolk: Ice Age Environments (BSc)
- Nepal: Mountain Hazards (BSc)
- Norway: The Arctic (BA/BSc)

* Compulsory trips

Please note that our fieldtrips may be subject to changes in future years.



**Bristol / Glasgow / Manchester / Liverpool
(Social Research, BA Level 2)**

'The field trip was invaluable as it brought together everything we had done across the whole year and was useful experience of the research process from beginning to end ready for our dissertations.'

**Skye / Lake District
(Scientific Research, BSc Level 2)**

'The field trip to Skye was a rewarding and truly interesting experience. The staff were helpful, enthusiastic and approachable and it's the part of my degree so far that I look back on and want to do again.'

**Berlin
(Culture, Politics and Contestation, BA Level 3)**

'Teaching staff were absolutely brilliant - very involved. It felt like we were one big team while in Berlin which was excellent - encouraged a sense of teamwork which made the module great fun.'

**Switzerland
(Alpine Landscapes and Processes, BSc, Level 3)**

'The staff made this module were great, really took the time to get to know us and give us support. My favourite module, thank you so much!'



Year abroad and placement year opportunities

As a Geography student you have the option to spend a year studying abroad or completing a placement in industry between the second and third years of the Geography programmes.

Placement Year

For a placement year, students usually spend a minimum of 40 weeks in one to three different placements, either in the UK or internationally. The year provides an opportunity to undertake professional level work experience in an area that aligns to your broad career aspirations. The area can be directly or indirectly related to Geography. Placement years can help you to enhance your CV, trial a career, improve your network, discover a new city or country, and earn money.

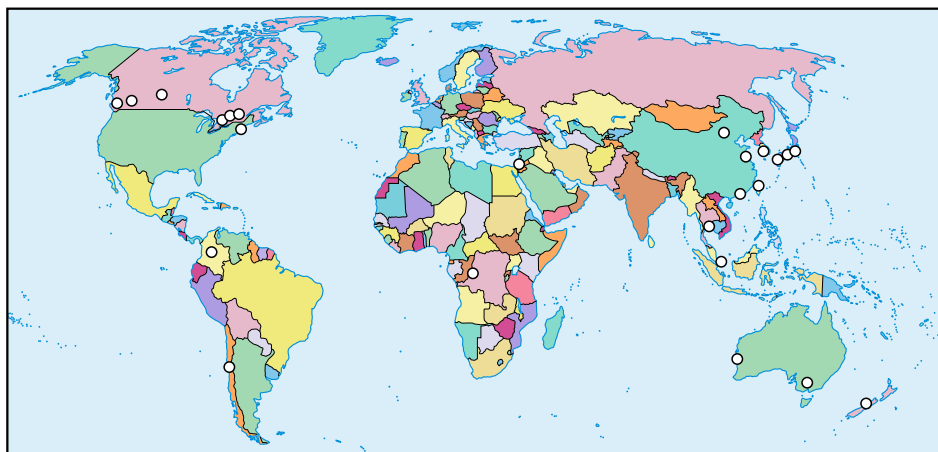
The Careers and Enterprise Centre at Durham can provide you with support in securing a placement. The placement year is usually assessed through two reflective assignments and a poster conference when you return to Durham for your final year. You retain your student status for the year, continue to receive academic guidance, and pay a tuition reduced to 20% of the standard fee you would normally pay.

Study Abroad

Geography students are welcome to participate in Durham University's Overseas Exchange Programme, which allows students to study at partner institutions around the world.

For Study Abroad, students can apply to any one of 30 universities, providing that they offer appropriate modules for Geography students. Geography students have previously studied at: National University of Singapore, University of British Columbia, Queen's University Canada, University of Otago New Zealand, University of Hong Kong, and the University of Melbourne. Study Abroad is a competitive, university-wide scheme, and decisions are made by a cross-faculty selection panel that looks at the grades and personal statement of candidates. The Geography department supports students with this application process in the first term of Level 2, and has a variety of successful applications as a result. While away you retain your student status for the year and pay a reduced tuition fee of 15%.

Find out more about study abroad options in Durham Geography:
<https://durham.ac.uk/departments/academic/geography/undergraduate-study/study-abroad/>



Departmental Support for Students

The Department of Geography has a well-established and comprehensive system of support for our undergraduate students, including: Academic Advisors, module convenors, administrative and professional support staff, and a dedicated online guide.

Support for our students begins before arrival in Durham. After acceptance, freshers are invited to participate in a comprehensive package of pre-arrival activities that are tailored to Geography students. Using a combination of Durham's virtual learning environment, social media and telephone surgeries, we ensure that our students arrive prepared for University life. We view the transition to University study as an ongoing process that starts before arrival and continues beyond the formal Induction Week.

We believe that the relationship between our students and their Academic Advisors is critical to the student experience and personal and academic development. It offers space and scope for dialogue, reflection and professional development. The purpose of this system is as follows:

- The role of the Academic Advisor is to help students adjust to the challenges of the undergraduate experience, from Induction Week to the new horizons of research-led learning and teaching at an advanced level
- Academic Advisors are responsible for overseeing a student's performance and development throughout the three years that the student is with us
- The same member of staff will act as Academic Advisor for Level 1 and until the end of Term 1 of Year 2. In Levels 2 and 3 Academic Advisor role is combined with that of Dissertation Supervisor.

The Academic Advisor process has been designed across all three years to ensure that students develop a relationship with members of staff who has a good working knowledge of their individual learning trajectories both through specific meetings, and through wider exposure to their academic development.



FAQ

These are a range of common FAQs.

More information is available on our website:

durham.ac.uk/geography/undergraduate/apply/faqs/

What is the difference between BA & BSc Geography?

The BA focuses on Human Geography, and the BSc has more of a focus on Physical Geography. However, if you want to continue to study both aspects of Geography, then on both programmes you can take module(s) from the other programme and integrated modules that combine Human and Physical Geography. These Integrated modules address urgent challenges such as climate change, natural hazards, and environmental governance. Recruitment to each degree course is treated separately, and so please carefully consider your choice when applying.

What are the entry requirements?

Most applicants will receive an offer based on three A Level subjects, which is typically A*AA for the BA and AAA or A*AB for the BSc. Neither offer includes General Studies or Critical Thinking, nor do we make offers based on EPQs.

Should I apply with predicted grades that are less than the typical offer?

We would encourage you to apply. In addition to your academic grades, we may also take into account your range of academic and non-academic achievements, and any indicators of potential. We do sometimes make offers that are less than our standard offers, and Durham University runs a contextual offer scheme that makes guaranteed reduced offers to applicants that meet certain criteria (see <https://durham.ac.uk/study/undergraduate/how-to-apply/what-happens-to-your-application/contextual-offers/>). We also occasionally accept 'near miss' applicants who have just missed their offer.

Do I need Geography A Level?

Most applicants do have Geography A Level (or equivalent). However, sometimes applicants have not had the opportunity to study Geography or have changed their interests, and combinations of subjects without Geography are also suitable. Regardless of whether you have studied Geography, we are looking for enthusiasm and excitement about the discipline and this should be evidenced in your Personal Statement.



Is a science subject required for the BSc degree?

We require you to have studied Geography. If you haven't studied Geography, then one science subject is required instead.

Which combination of subjects should I choose at A Level (or equivalent)?

We do not advise applicants on which A Level subjects to choose and do not expect all applicants to have studied the same subjects. Many different subjects are suitable preparation for a Geography degree. Applicants might want to explore links between their subjects and Geography in their Personal Statement. We realise that when selecting their subjects applicants will also want to consider what might offer the best chance of an A or A*.

Will it help my chances if I study four subjects at A Level?

We do not have any preference between those who have studied 3 or 4 A Levels. We do not advise applicants on which and/or how many A Level subjects to choose and feel it is important that the applicant takes responsibility for their choice of subjects.

Can I take a gap year between school and university?

Yes, it is possible to make a deferred entry through UCAS. It is not easier or more difficult to gain a place this way. You can also apply once you have your A level (or equivalent) grades.

Are there opportunities for overseas trips?

Yes. At Level 3, students can opt to take an overseas residential trip. In 2015/2016 we are running fieldtrips to Berlin, Chicago, Iceland, Nepal, Norway, and Switzerland.

Students can also study abroad, spending an additional year between Levels 2 and 3 with one of Durham University's partner institutions, which include: National University of Singapore, University of British Columbia, Queen's University Canada, University of Otago, New Zealand, University of Hong Kong, University of Melbourne. See our website for further information:

<https://durham.ac.uk/departments/academic/geography/undergraduate-study/study-abroad/>



Can I transfer between degree courses or particular modules?

To maintain the student experience, we have a quota for each degree course. A small number of transfers between BA and BSc and vice-versa may be permitted at the end of Level 1, but this depends on space and is not guaranteed. You will register for modules ahead of the start of the year. If you wish to change one or more modules, you must seek advice from the department(s) concerned within the first two weeks of Term 1. If you are permitted to change modules or degree programme, it is your responsibility to catch up the work that you have missed.

What are the career opportunities for geography graduates?

Both Geography graduates and Durham graduates have good employability records compared to other disciplines and many other institutions. The prospect for Durham Geography graduates is therefore excellent! Of our 2017 Geography graduates, 90% secured employment or went on to further study within 6 months of graduating. The median annual salary for those in full-time employment was £25,000. Geography is popular with employers because of the mix of literacy, numeracy and data analysis and presentation skills. As well as specific vocational jobs, a Geography degree provides a springboard into diverse areas such as administration, management, planning, finance and banking, marketing, research and education. Many students take further training for planning or legal professions, or enrol on higher degrees.

How important is it to undertake extra-curricular activities?

Extra-curricular activities, such as the Duke of Edinburgh Award, are not essential qualifications and would never be included in an offer. We are aware that everyone has different opportunities available to them, and we do not look for any particular activities. Use your Personal Statement to draw attention to experiences from any part of your life that have helped develop your passion for Geography. Evidence of a deep commitment to your local area is just as important as international experiences. We would not advise applicants to take part in extra-curricular activities at the expense of academic success.

Which college should I apply for?

There are a wide variety of Colleges from which to select a preference, but all colleges will provide a good base for studying Geography. Please visit durham.ac.uk/experience/colleges/ for a full list. All are within easy walking distance of the Department. Each College has its own social, musical and sporting activities. Ask any Durham student for advice and they are bound to tell you that their college is the best!

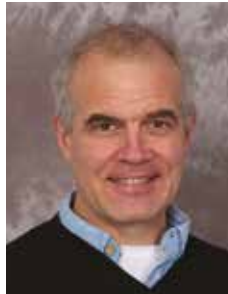


Key Personnel



Professor Colm O'Cofaigh
Head of Department

colm.ocofaigh@durham.ac.uk



Professor Andrew Baldwin
Director of Undergraduate Admissions

w.a.baldwin@durham.ac.uk



Professor Ben Anderson
Director of Education

ben.anderson@durham.ac.uk



Professor Rebecca Hodge
Deputy Director of Education

rebecca.hodge@durham.ac.uk



Dr Jesse Lehman
BA Programme Director

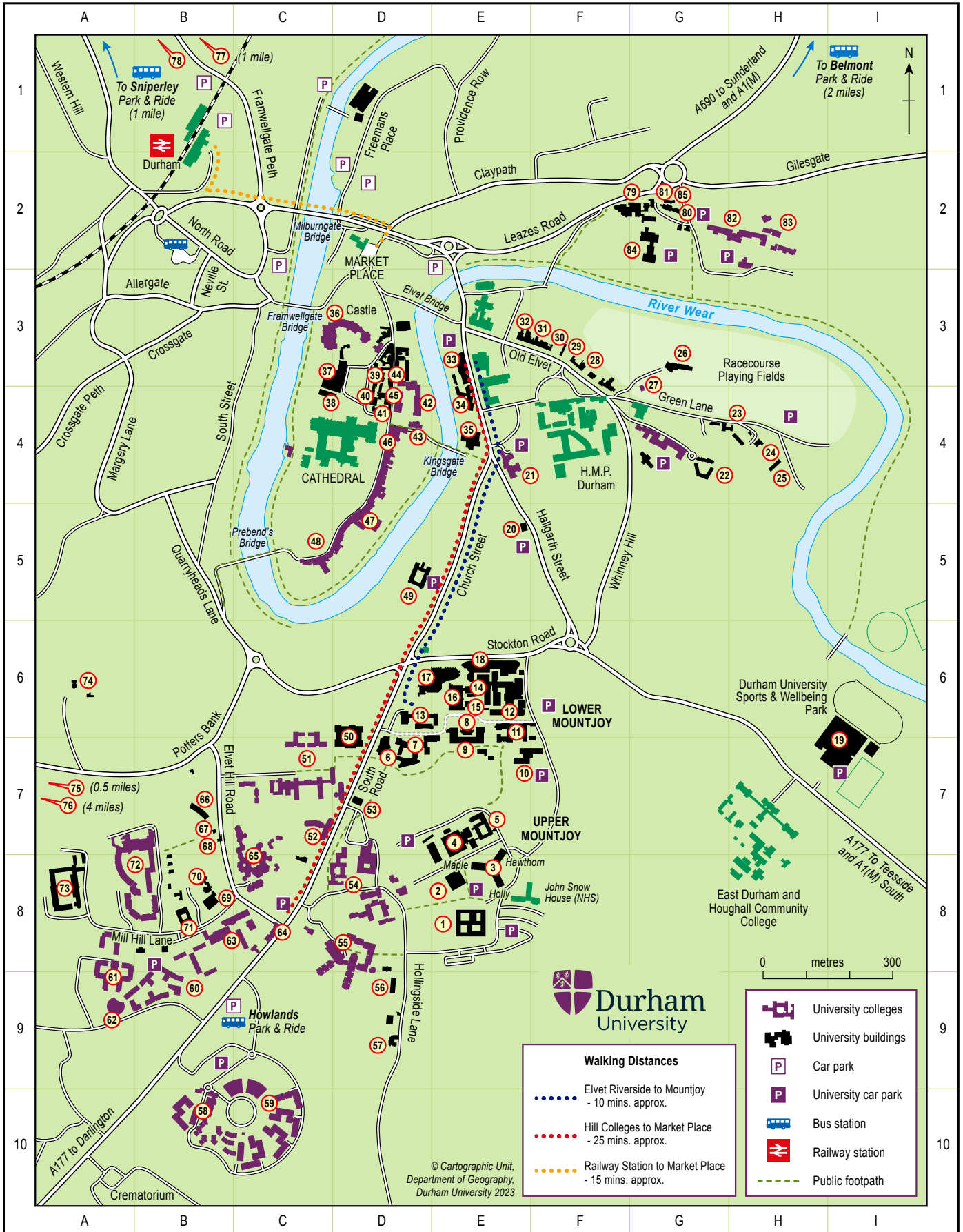
essica.lehman@durham.ac.uk



Dr Simon Engelhart
BSc Programme Director

simon.e.engelhart@durham.ac.uk

Durham City Map



Durham City Map key

Number	Building	Grid reference
18	Administration (Palatine Centre)	E6
16	Anthropology (Dawson Building)	E6
16	Archaeology (Dawson Building)	E6
45	Assembly Rooms (Durham Student Theatre)	D3
4	Biological Sciences	E7
56	Botanic Garden	D9
8	Calman Learning Centre	E6 / E7
18	Careers and Enterprise (Palatine Centre)	E6
14	Chemistry, Scarborough Lecture Theatre	E6
82	College of St Hild and St Bede	G2 / H2
43	Classics and Ancient History	D3
55	Collingwood College	D8
3	Computing and Information Services	E8
12	Confluence Building	E6
18	Counselling Service (Palatine Centre)	E6
18	Disability Support (Palatine Centre)	E6
77	Dryburn Court (Ustinov College)	n/a
50	Durham Centre for Academic Development (DCAD)	C7
35	Durham Students' Union (Dunelm House)	E4
73	Durham University Business School	A8
9	Earth Sciences	E7
73	Economics and Finance	A8
84	Education Studies	G2
70	Elvet Hill House	B8
33 / 34	Elvet Riverside 1 and 2	E3
11	Engineering	E7
34	English Studies	E5
25	Estates Operations	G4
34	Faculty Office (Arts and Humanities)	E3
73	Faculty Office (Business)	A8
14	Faculty Office (Science)	E6
9	Faculty Office (Social Sciences and Health)	E7
13	Geography, Applebey Lecture Theatre	D6
64	Government and International Affairs: South End House (Politics)	C8
67	Government and International Affairs: Al-Qasimi Building (Middle Eastern and Islamic Studies)	B7
54	Grey College and Holgate House	D8
42	Hatfield College	D4
21	Hatfield College (Palmer's Garth)	E4 / F4
49	Hatfield College (James Barber House)	EE
23	Health Centre	G4
23	Health and Safety Office	H4
44	History	D3
39	Institute of Advanced Study	D3
13	Institute of Hazard and Risk Resilience	D7
18	International Office	E6

Durham City Map key (cont.)

Number	Building	Grid reference
17	IT Services Desk (Bill Bryson Library)	E6
61	John Snow College	A9
59	Josephine Butler College	C10
18	Law School (Palatine Centre)	E6
34	Liberal Arts (Elvet Riverside 2)	E3
17	Library (Bill Bryson section)	E6
1	Mathematical and Computer Sciences	E8
34	Modern Languages and Cultures	E4
3	Mountjoy Centre, including: Hawthorn Wing, Holly Wing, Maple Wing	E8
37	Museum of Archaeology (Palace Green Library)	D3
38	Music	C4
85	Nursery	G2
74	Observatory	A6
69	Oriental Museum	B8
37	Palace Green Library	D3
18	Palatine Centre	E6
40	Pemberton Lecture Rooms	D3
31	Philosophy	F3
6	Physics (Ogden Centre for Fundamental Physics)	D7
5	Psychology	E7
26	Racecourse Playing Fields	H3 / H4
2	Rowan House	E8
40	Security Office	D4
25	Social Work (Main Teaching Rooms)	E3
28	Sociology and Criminology	F3
60	South College	B9
23	Sport and Exercise Sciences	F3
19	Sports and Wellbeing Park	I6 / I7
72	St Aidan's College and Lindisfarne Centre	A7 / A8
46	St Chad's College	D4
22	St Cuthbert's Society (Parsons Field)	G4
48	St Cuthbert's Society (South Bailey)	C5
77	St John's College	D5
51	St Mary's College	C6 / C7
59	Stephenson College	B10
50	Teaching and Learning Centre	D6 / D7
71	Teikyo University, Lafcadio Hearn Centre	B8
52	Teikyo University Shoichi Hall / Etsuko Hall	C7
41	Theology and Religion	D4
65	Trevelyan College and Sir James Knott Hall	C7 / C8
40	Union Society	D4
36	University College (Durham Castle)	D3
76	Ushaw College	N/A
75	Ustinov College (@ Sheraton Park)	B10 / C10
63	Van Mildert College	B8 / C8

Upper and Lower Mountjoy Map

