



St Cuthbert's Society



Self-Guided Tour
September 2025 Open Days

Bailey and Parsons Field Tour

Please follow the tour at your own pace and feel free to ask questions to any of the Reps or Staff on site. We're happy to help as best we can.

You can find out more about our wonderful College through the link below and by following us on social media:

<https://www.durham.ac.uk/colleges-and-student-experience/colleges/st-cuthberts-society/>



@stcuthbertssociety



@CuthsSociety



St Cuthbert's Society

Room 1:
House 12 Foyer



This is the entrance to House 12, the Bailey Reception, and staff offices. Gender neutral toilets are located to the right before the double doors – please feel free to use the facilities.

To continue the tour, go through the double doors into Lindisfarne.

Room 2: Lindisfarne



This room serves as the Junior Common Room (JCR) and is usually filled with students during Term Time. Meetings of the JCR Executive Committee take place here (at the table to your right) and information is shared on the bulletin boards for students about the different clubs, societies, support services, and social events we offer at Cuth's.

To continue the tour, go through the double doors at the far left of the room to the Dining Hall

Room 3: Dining Hall Corridor



Proceed through here to get to the Dining Hall.

Room 4: Dining Hall



This is where all meals and catered events are served at Cuth's. Students living on the Bailey will have their meals in here and all students are welcome to come and dine with us. Anyone not on a catering package can purchase a pay-as-you-go meal whenever they want. A buffet breakfast, lunch, and dinner are served 7 days a week in Term Time. We also host Formal Meals here throughout terms, which are usually a three-course meal, often with a theme. Previous themed Formals have been Burns Night, Murder Mystery, Sports and Societies Awards Night, and Halloween. When we aren't eating, this room also serves to host events, like silent discos, bingo nights, alumni events, and our annual Christmas Pantomime. We also host

various events with our new enrichment programme, *Evergreen*. Over the past year, students have been able to join us in gardening activities, learning heritage crafts, and participating in artwork projects in Cuth's gardens. You can find out more about this programme on the Bulletin Boards by the back door in the Dining Hall.

Please continue through the Dining Hall and exit through the door on your right.



To continue the tour, go through these doors into the Garden.

Room 5: House 12 Garden



Cuth's is fortunate to have an abundance of outdoor space. You will often find students enjoying their meals, studying, or relaxing with friends in our green spaces. The garden of House 12 is also the site of all our Cuth's Day events – a large annual musical festival with tribute acts, food trucks, and games.

In addition to House 12, we also have the Wendy House and House 13 (further along the tour), House 8, House 26, and

House 27, and the lush outdoor spaces of Parsons Field – all of which have wonderful, accessible gardens.



To continue the tour, go under here (before the archway onto the street) and take a left inside the Bailey Bar.

Room 6: Bailey Bar



Go inside this door and straight ahead to see the Bailey Bar. This building also houses some of our Fresher accommodation – however, these rooms are currently closed for refurbishment, so please do not go up the stairs!

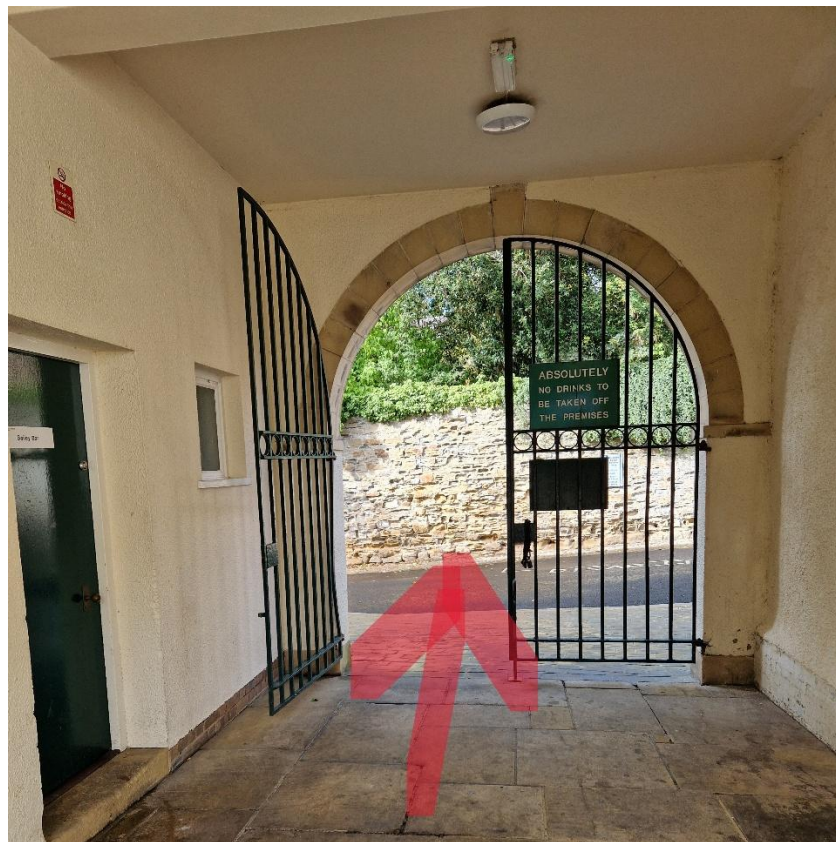
If you continue into the bar, feel free to have a look at the photos on the walls of our various sport and society group portraits to see some of the wonderful activities we offer here at Cuth's. On the blackboard straight ahead, you can get an idea of the types of drinks served here. Be sure to read about the 'Frog' – this is a classic Cuth's drink and not for the faint of heart! We

also provide specialty soft drinks and run various safety campaigns around responsible drinking in the bar.

You'll see a large black circle drawn on the bar floor. This is where anyone running for a role in the Executive Committee must stand to deliver their campaign speech. It is a tradition in Cuth's, and we were sure to leave it in situ when the floors were recently refurbished.

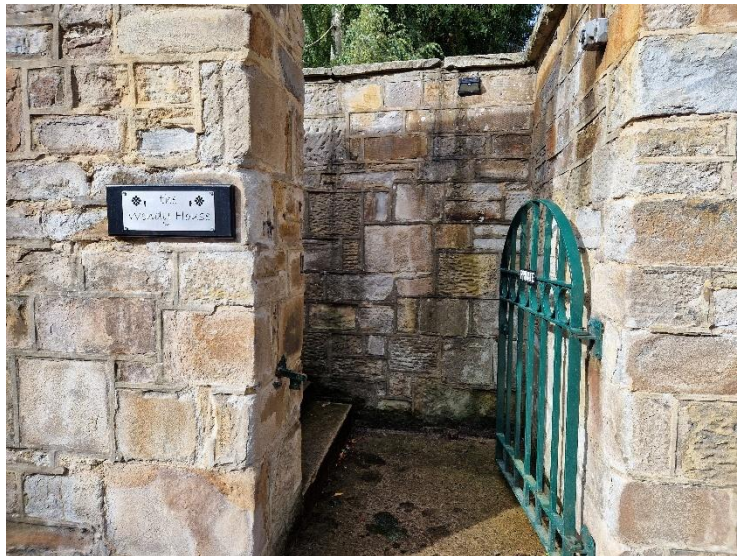


To continue the tour, go back out the way you came and follow the red arrows in the photos below.



Room 7:

Wendy House Accommodation



Enter the gates of the Wendy House (across the street from House 12), follow the path through the gardens, and enter the green door of the building ahead.



Enter the green door and go to the first door on your left (with a 1 on the door). This is an example of a twin room. If you go back out to the main foyer, enter the door straight ahead. This is the shared kitchen facilities for the Wendy House.



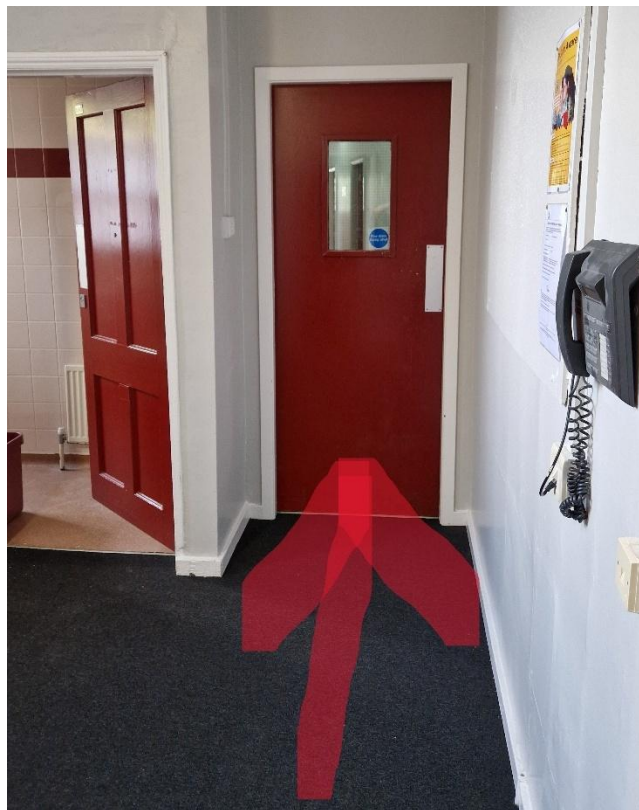
Go out the way you came and back through the Gardens to see single room accommodation in House 13. It is the large brick building directly in front of you as you leave the Wendy House.



Room 8:
House 13 Accommodation



Enter the green doors of House 13. Walk into the foyer, take a right, and go through the red doors.



After you go through the red doors, enter the room on your immediate right. This is an example of a single Bailey room.



Go back out the way you came and turn left on the street.

Room 9:

House 8 Library

Walk down the street and around the corner.



Enter the red brick building with a green door to your right.





We have the only independent student library left in the University – it is also entirely run by students. Please pardon the mess (we are having it refurbished).

Continue down the Bailey to go to Parsons Field (our self-catered site) to see our ensuite and standard accommodation.

Short Walk (under 10 mins) to Parsons Field



Turn to the right when you exit the Library and walk up the Bailey (towards town). House 26 and 27 are also our accommodation. These are closed to the public for tours.





Take a right on Bow Lane, across from the Cathedral and just before the Church of St Mary-le-Bow. Walk down Bow Lane to Kingsgate Bridge.



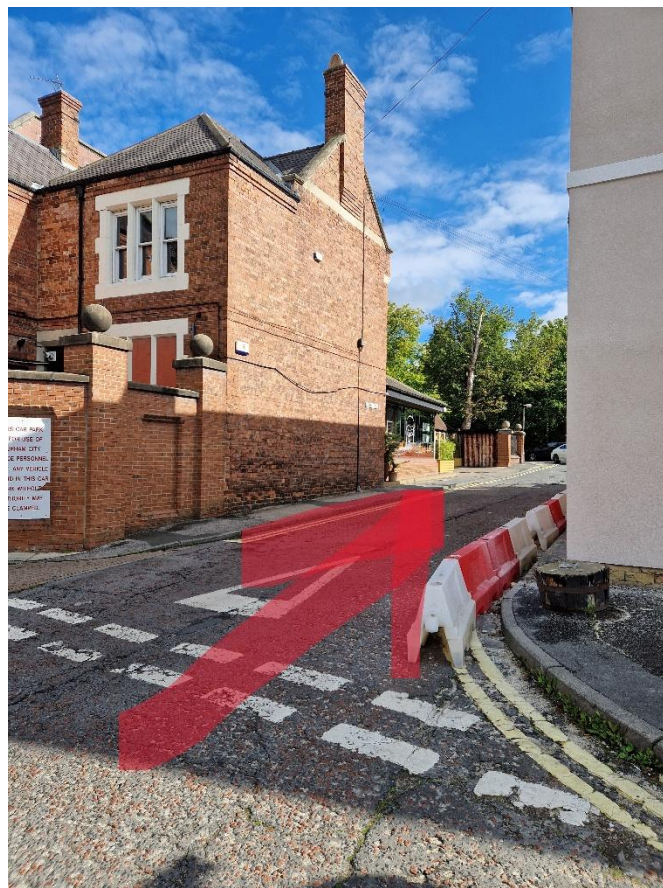


Go down the steps and across Kingsgate Bridge. Go straight past the Student's Union (on your left) and cross the street through the lights ahead of you.





Walk down Elvet Crescent and take a right at Court Lane.





Go straight down the road and past the Court House (on your right). Go through the gates and to the road ahead (Old Elvet).



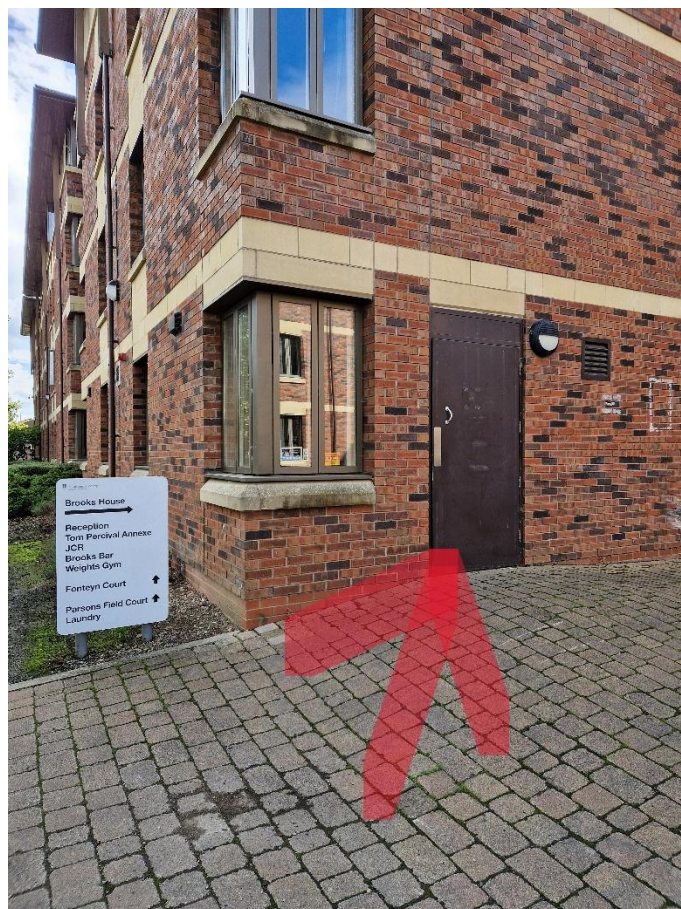


Cross Old Elvet and go to the road on your right. You will see gates and a sign that says Parsons Field.





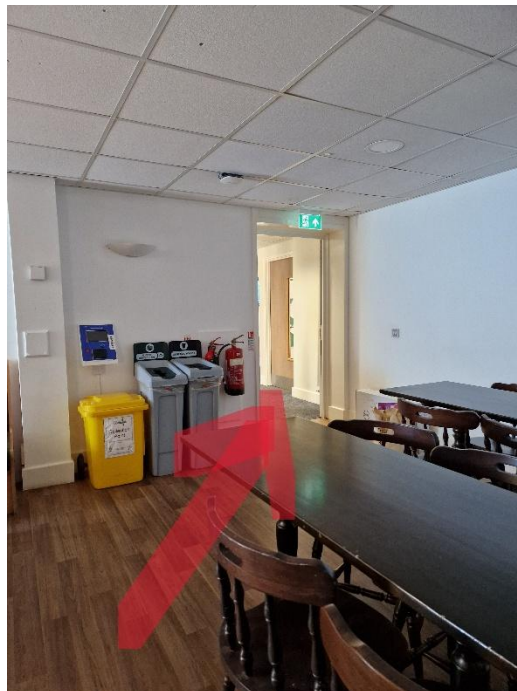
Go down this lane to the red brick building (Brooks House) and go through the brown door to Brooks Bar – yes, we have 2 bars!



Room 10: Brooks Bar



This is a popular spot for all our students, and it doubles as a study/café space during the day. Continue around the bar and through the other door for the rest of the facilities tour.



Room 11: Brooks Gym



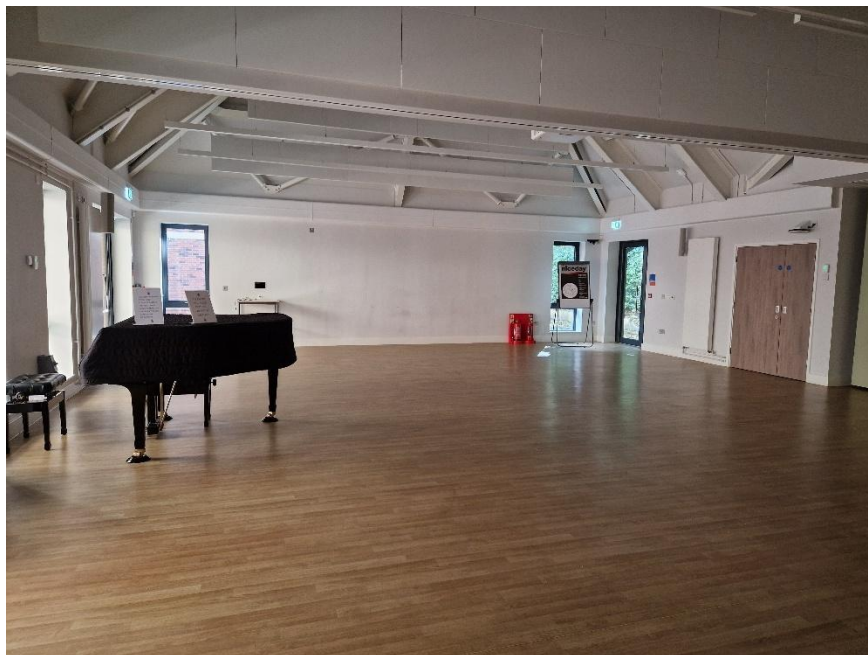
Continue straight through this door and to the left. You'll see the cardio gym on your right as you walk towards the JCR and Tom Percival Annex. Toilet facilities are available here!



Room 12 and 13:
JCR and Tom Percival Annex (TPA)



This newly built annex provides social and event space for students and staff, alike. All Cuth's students can use the JCR and engage with the many events we host in the TPA. During the exam season, we held free yoga and meditation sessions here! Students are also welcome to use the piano.



Go back the way you came and through the Reception to Brooks Courtyard. Follow the red arrows to Pavilion A to see ensuite accommodation.



Room 14:
Ensuite Accommodation



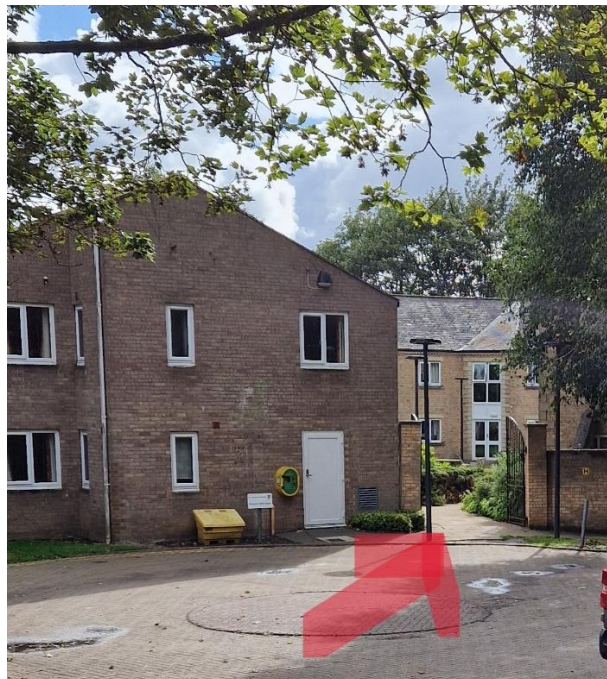
Go through the doors of Pavilion A and to the door on the left to A0 block. The first door on your left is A0.5 and typical ensuite accommodation.



All ensuite accommodation comes with a single bed, desk, cupboard, and a separate shower room with a private toilet, sink, and shelf. Continue down the hall to the last door on your left to see the shared kitchen facilities.



Go back out through the doors of Brooks Pavilion A and continue down the road past the bar.



Walk past the turning circle and through the gates into the courtyard. Parsons Field Court is on your left and Fonteyn is on your right. Go to the right to Fonteyn and the left set of doors.

Room 15:
Standard Accommodation



Enter the double white doors (as shown in the above picture on the left) and then enter the building. Go through the door on the left of the staircase.



This concludes your tour of St Cuthbert's Society! Thank you for taking the time to look around and we hope you enjoyed your experience with us.

Please do feel free to ask any questions and email us for more information. You can reach us at cuthberts.reception@durham.ac.uk. Your email will be passed on the most appropriate member of staff by our Reception Team.

Look at the following pages for more information about accommodation costs, catering menus, and the range of facilities we offer at both the Bailey and Parsons Field sites.



St Cuthbert's Society

COSTS

St Cuthbert's Society offers the widest selection of accommodation and catering packages than any other College. All lets include energy costs, uncapped wireless internet, and the use of college facilities. Catered packages include all your meals for the 39 weeks of term and Induction Week.

Catered Accommodation

Standard Single Room (Shared bathroom facilities): **£10,232.78**

Standard Shared Room (Shared bathroom facilities): **£9,618.53**

Self-catered Accommodation

Standard Single Room (en-suite): £7,800.98

Standard Single Room (Shared bathroom facilities): £7,145.78

Part-catered Package – Term Time Catering (39 Weeks)

Meal Package (10 College meals a week in term time) - £1,578.00

Facilities

Bailey Site



51 Single Standard Bedrooms
32 (64 spaces) Twin Standard Bedrooms

Fully Catered

Reception
College Offices
Dining Hall
Library
Laundry

Computer Room
College Gardens
Social Space
Weights Gym
Bailey Bar



Parson's Field Site

157 Single Standard Bedrooms
93 Single En-suite Bedrooms

Self Catered
[Meal Package available]

Reception
Laundry
Computer Room
Student Support
Office

Social Space
Cardio Gym
Brooks Bar
Music Room